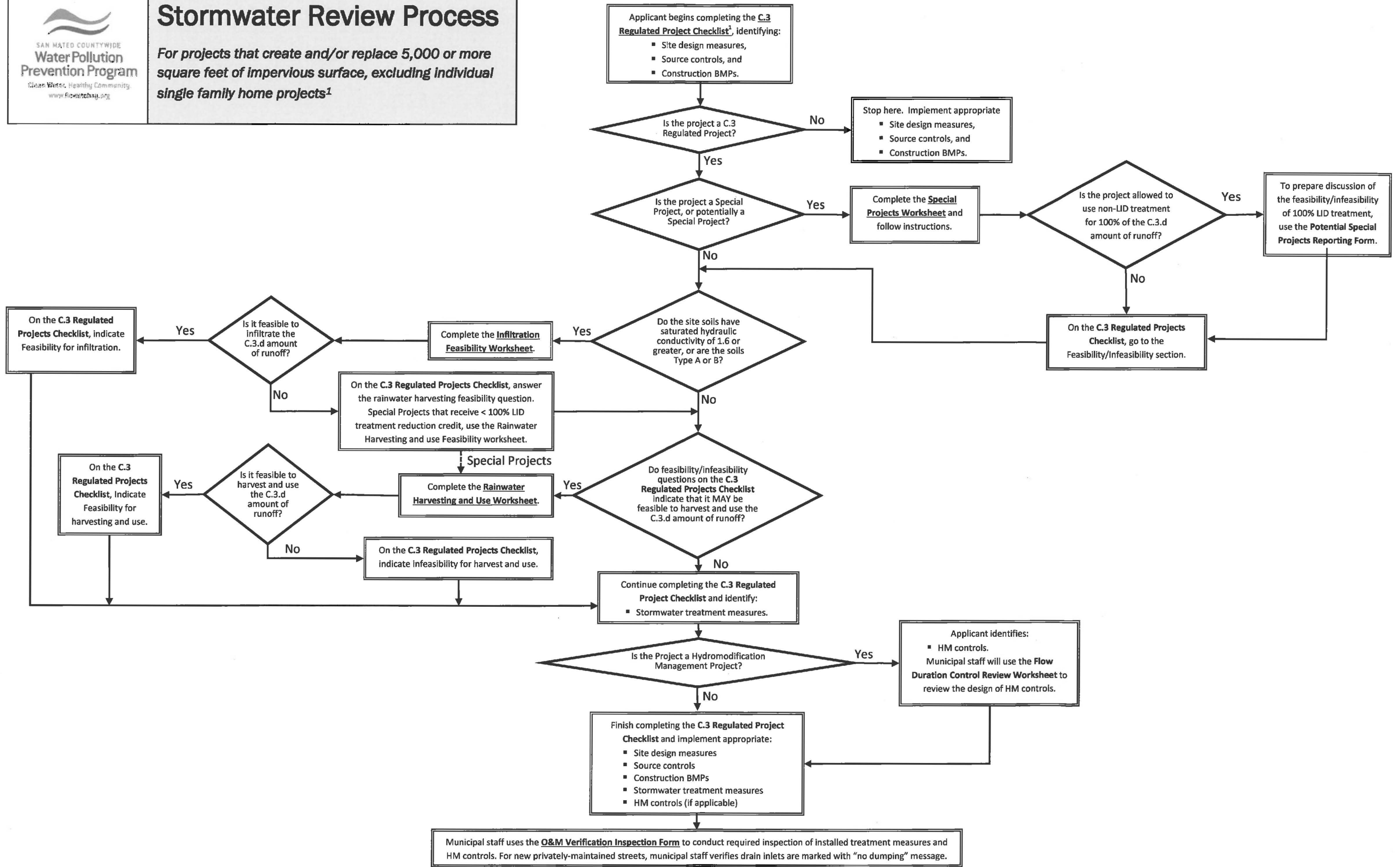




# Stormwater Review Process

For projects that create and/or replace 5,000 or more square feet of impervious surface, excluding individual single family home projects<sup>1</sup>



<sup>1</sup> Projects that create/replace less than 5,000 square feet of impervious surface should complete the Stormwater Checklist for Small Projects to select appropriate site design measures, source controls and construction BMPs. Individual single family home projects that are not part of a large plan of development are NOT considered C.3 Regulated Projects and should complete the Stormwater Checklist for Small Projects regardless of project size.